

ENTRIES ACCEPTED:
SATURDAY, SEPTEMBER 24
 1:00 P.M. – 5:00 P.M.
SUNDAY, SEPTEMBER 25
 1:00 P.M. – 6:00 P.M.

NO ENTRY FEES

DIVISION

10

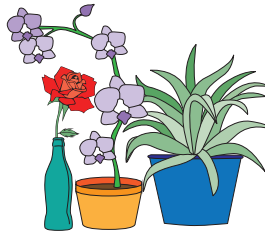
DECORATIVE PLANTS

Register these exhibit items outside

Classes:

- A** Ages 18 & Up
- C** Youth ages 11 – 17
- D** Youth ages 10 & Under

Awards: 1st Place \$5 & Blue Ribbon
 2nd Place \$3 & Red Ribbon
 3rd Place \$2 & White Ribbon



RULES:

- Only one item per lot number can be entered by each exhibitor.
- Articles exhibited in this division must be the work of the exhibitor whose name appears on the entry tag.
- Items will be accepted and displayed at the superintendent's discretion.
- The option is reserved to withhold ribbons and awards in lots where there is no deserving entry.
- This division is for living specimens only, **NO** artificial flowers accepted.
- All flowers **MUST** be displayed in **CLEAN** containers which are tall enough to hold flowers upright, and **should be heavy enough to not tip over. DO NOT** use valuable containers.
- Directors will endeavor to care for all exhibits but cannot be held responsible for loss or injury to exhibit.
- **All potted plants MUST have some type of drip pan.**
- **Specimen exhibits MUST have been grown by exhibitor for AT LEAST 3 months.**
- Exhibitors must know the name of the plant or flower.
- "Any Other" and "Any not listed" are the same as "Any Other Not Listed."
- Entries must be picked up the **SUNDAY** immediately following the Fair **between the hours of 11 am - 3 pm.** The FAIR IS NOT RESPONSIBLE for any item not picked up on Sunday immediately following the Fair.



BEST OF SHOW AWARD – There will be one award for the winning adult entry (Class A - \$15) and one award for the winning youth entry (Class C & D - \$15).

Register your items online by going to www.ChowanFair.com. Click on the **Exhibits** tab.

POTTED & HANGING PLANTS

- LOT
- 01 Gerber Daisy
 - 02 Fern
 - 03 Ficus (weeping fig)
 - 04 Norfolk Island pine
 - 05 Philodendron
 - 06 Succulent – cactus
 - 07 Succulent – any other
 - 08 Coleus
 - 09 African violet
 - 10 Begonia
 - 11 Geranium – red
 - 12 Geranium – pink
 - 13 Geranium – white
 - 14 Impatiens
 - 15 Orchid
 - 16 Bougainvillea
 - 17 Ivy
 - 18 Lantana
 - 19 Spider plant
 - 20 Wandering Jew
 - 21 Asparagus Fern
 - 22 Aloe
 - 23 Christmas cactus
 - 24 Ornamental pepper plant
 - 25 Mexican Heather
 - 26 Dish garden

- LOT
- 27 Collection of 3 or more plants
 - 35 Any other potted plant not listed

CUT FLOWERS

- LOT
- 38 Ageratum
 - 39 Celosia – crested type
 - 40 Celosia – plume or feather type
 - 41 Chrysanthemum – standard or large
 - 42 Chrysanthemum – small
 - 43 Cosmos
 - 44 Dahlia – large
 - 45 Dahlia – small
 - 46 Gerber daisy
 - 47 Marigold – yellow
 - 48 Marigold – orange
 - 49 Marigold – any other
 - 50 Petunia
 - 51 Rose – red
 - 52 Rose – pink
 - 53 Rose – yellow
 - 54 Rose – lavender
 - 55 Rose – white
 - 59 Rose – miniature
 - 60 Rose – any other

- LOT
- 61 Salvia – scarlet sage
 - 62 Snap dragon
 - 63 Sun flower
 - 64 Zinnia
 - 70 Any other cut flower not listed

FLOWER ARRANGEMENTS

- LOT **Contained (no loose pieces)**
- 80 Cut flowers
 - 81 Dried materials
 - 82 Green Foliage
 - 83 Wild materials
 - 84 Miniature arrangement
 - 90 Any other arrangement